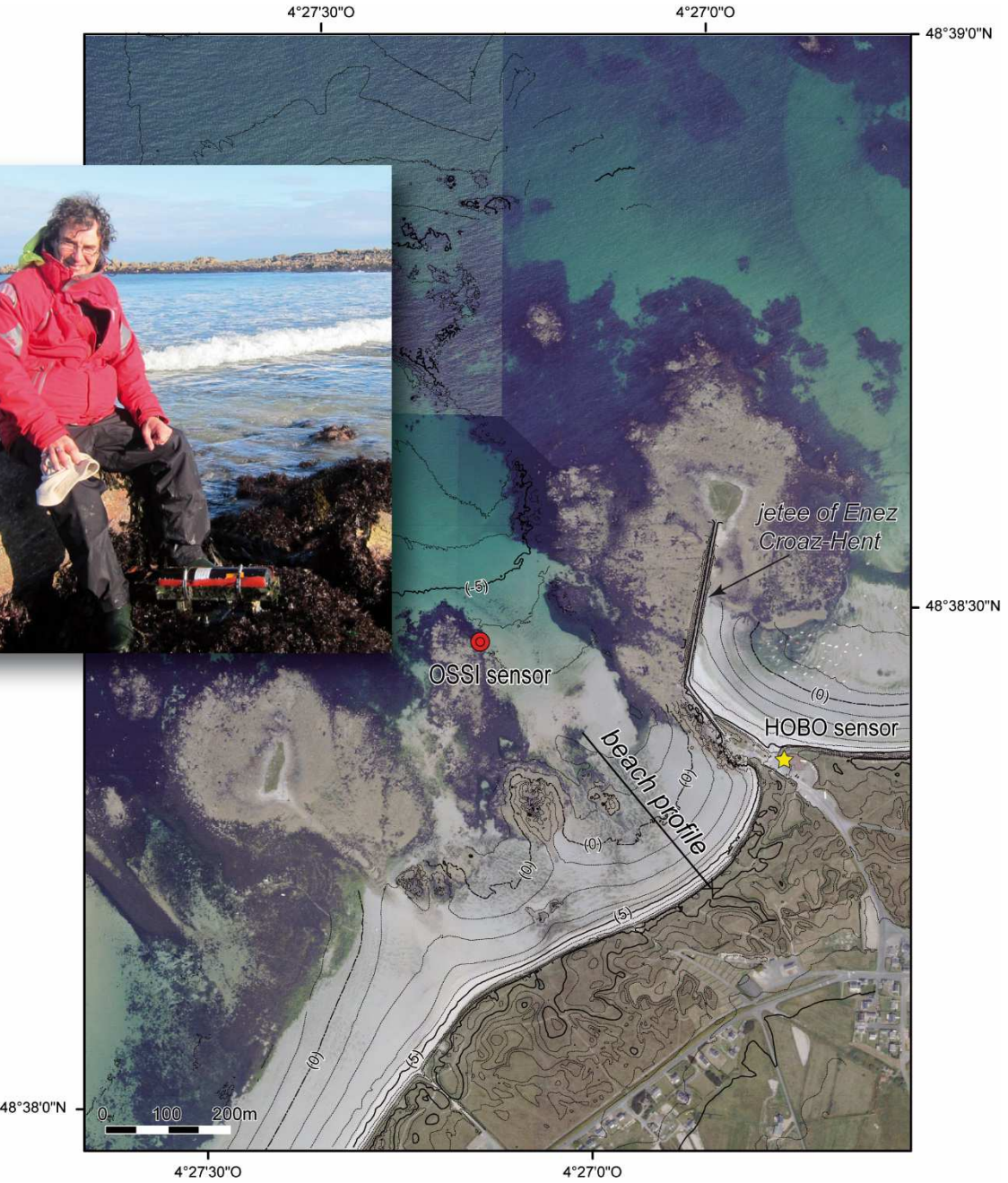
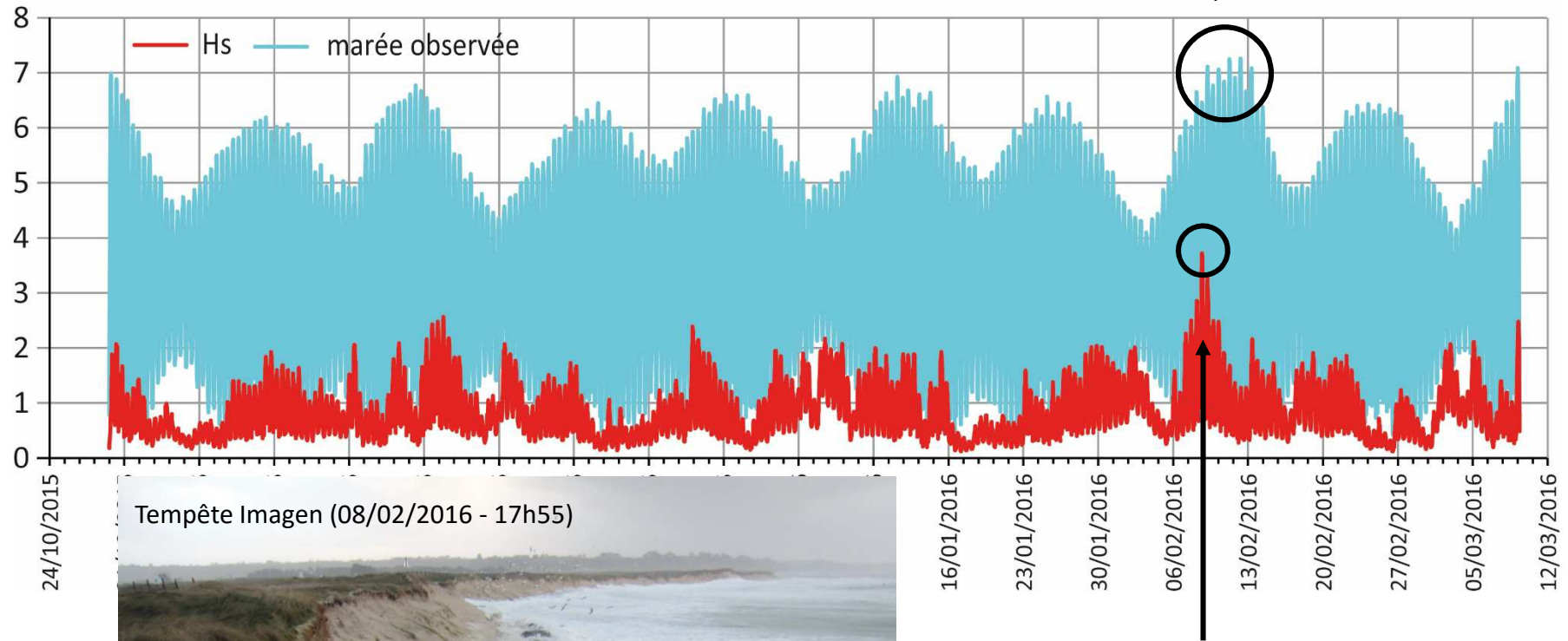


Mesures hydrodynamiques (houle et niveau d'eau) Depuis 2012

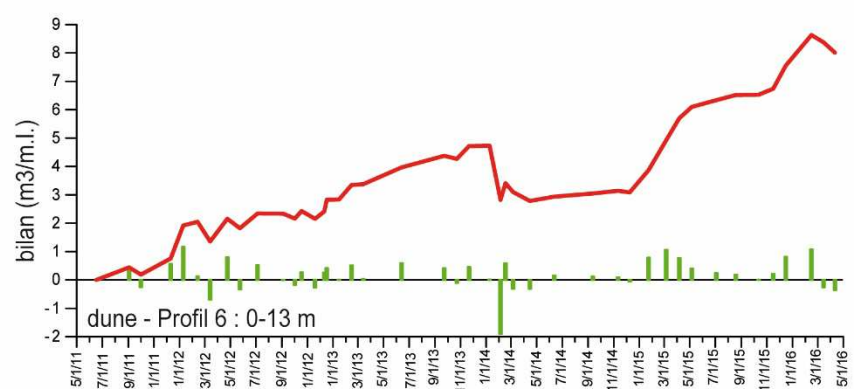
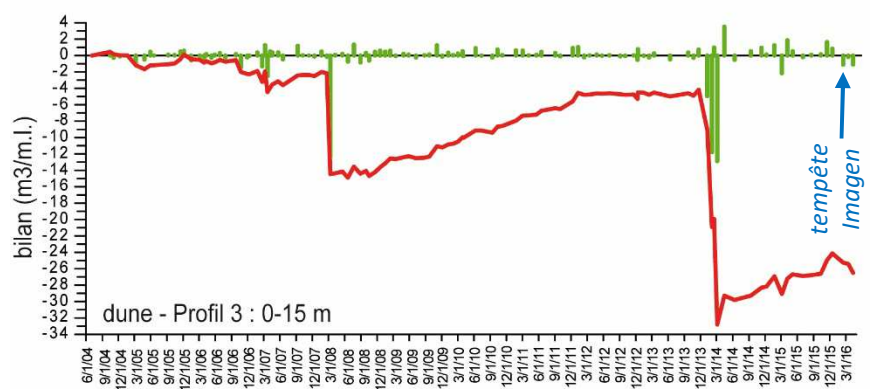
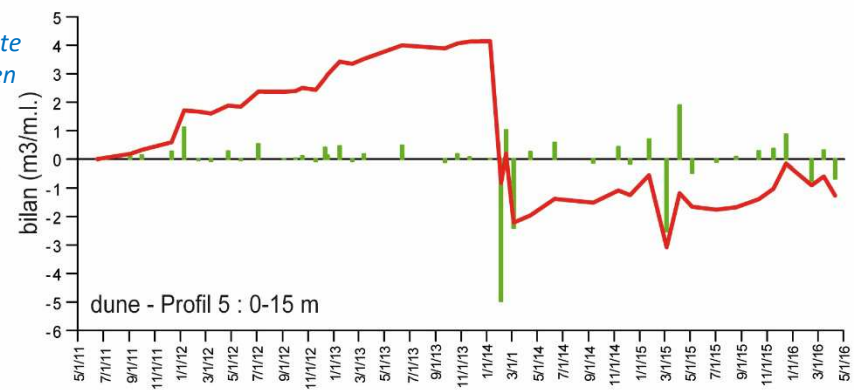
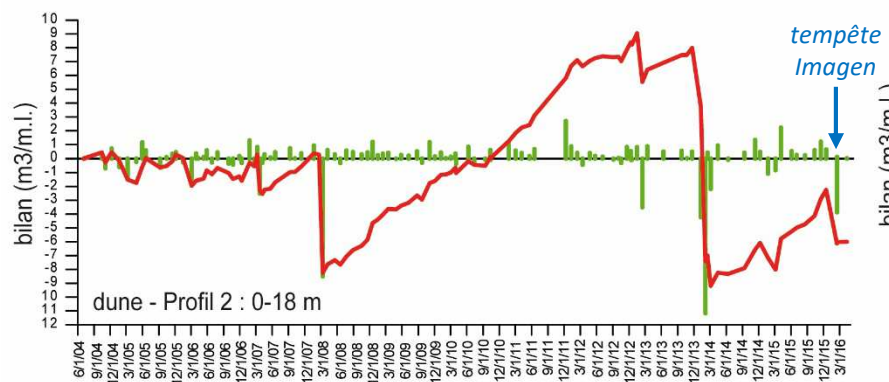
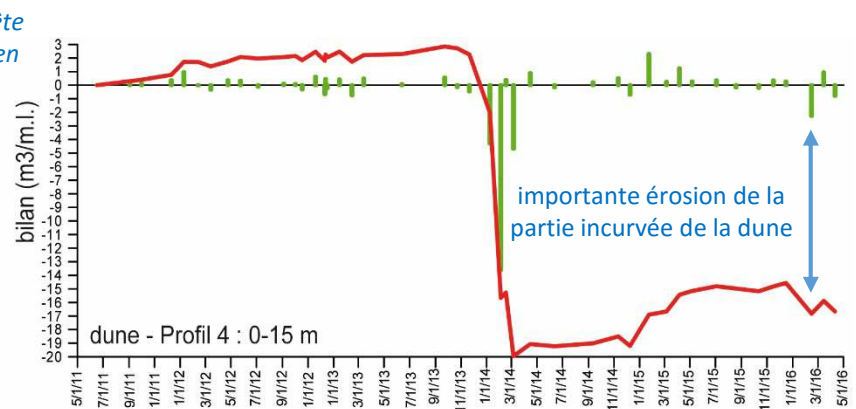
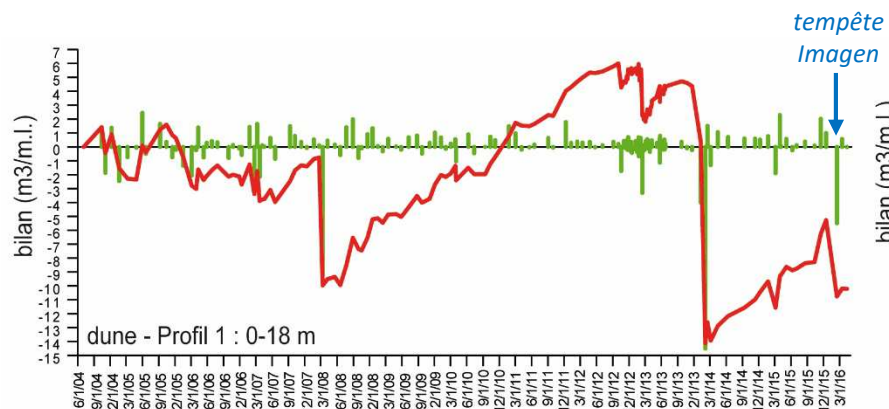


11/02/2016
niveau : 7,25 m (ceff. 108)
Hs : 1,55 m



08/02/2016
Hs : 3,72 m = tempête Imogen (Ruzica)
marée : 6,46 m (coeff. 90)

Évolution du profil de dune



03/03/2014 (tempête Christine)



12/09/2014



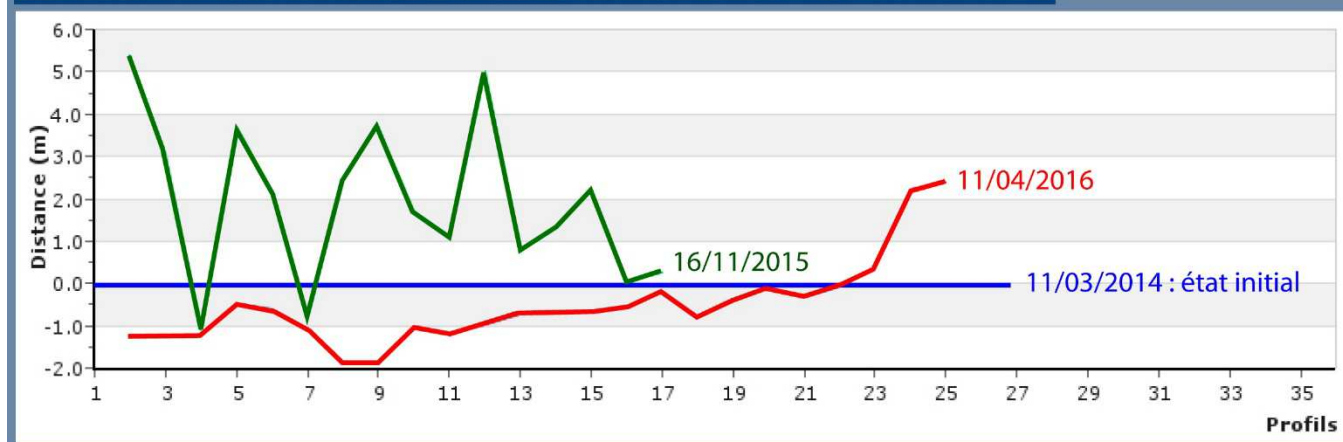
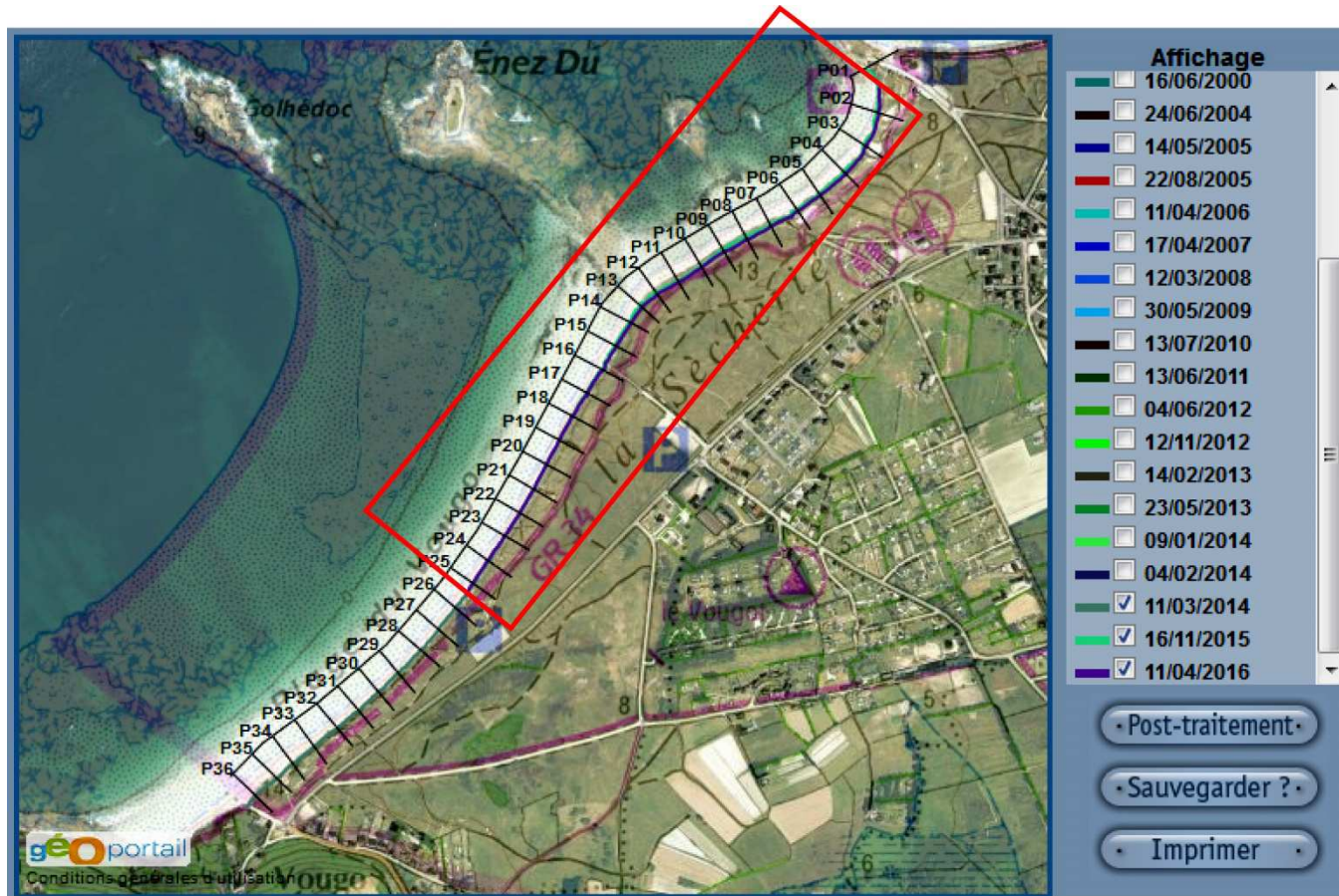
23/01/2015



09/06/2015







Évolution du profil de dune / plage

